



Hawkeye Precision Borescopes

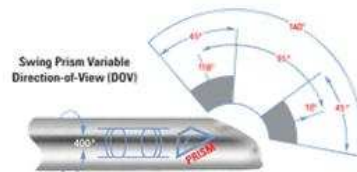
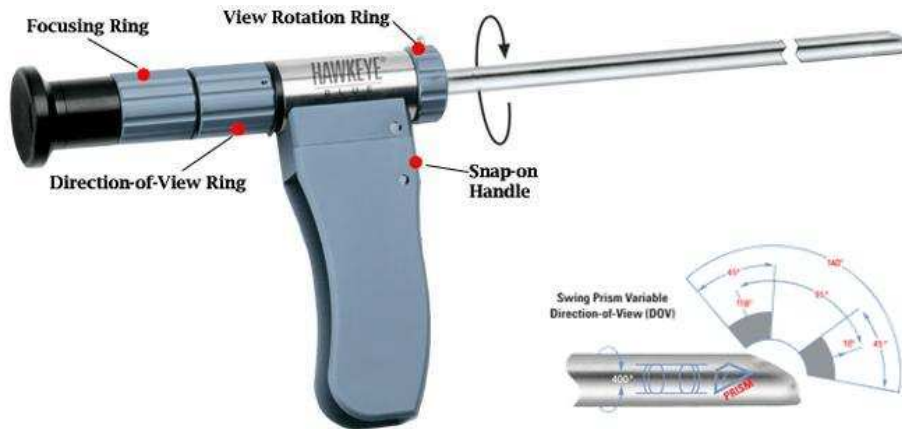
Blue Swing Prism

Length: 17.9", 12.8 & 23.8" – FOV 45°

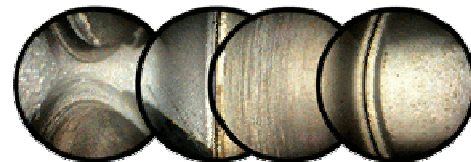
Diameter: 0.237", 0.315" & 0.355"

DOV: variable from 16° to 118°

Three sizes: 6mm x 455mm, 8mm x 355mm, 9mm x 605mm



Valves - Cylinder Head - Cylinder Wall - Piston



Swing Prism Borescopes

The Hawkeye Blue Swing Prism borescope has a tiny prism at the tip that pivots, or "swings", to vary the direction-of-view from 16° to 118°. A ring on the borescope body controls the prism direction. The field-of-view is 45°, so the borescope effectively sees from -7° to 133°.

Another ring on the borescope body is used for focus and a third ring rotates the borescope tube over 360°, allowing the user to sweep out a full view of the cavity without turning the borescope body.

Diesel engine mechanics use the Swing Prism borescope to examine cylinders, pistons, and valves. Use the Swing Prism to locate and investigate FOD (foreign object damage and debris) in jet engines.

- **Swing prism tip to change DOV from 16° to 118°**
- **Rotate prism tube to scan 360° volume**
- **Focus from 3mm to infinity**
- **See Valves, Cylinder Head, Cylinder Wall and Piston through spark plug hole with one scope**



Outside Dia	Length	DOV	FOV	Model #
0.237" (6mm)	9.6" (245mm)	16° to 118°	45°	HBS 060 245 045
0.237" (6mm)	17.9" (455mm)	16° to 118°	45°	HBS 060 455 045
0.315" (8mm)	12.8" (325mm)	16° to 118°	45°	HBS 080 325 045
0.355" (9mm)	23.8" (605mm)	16° to 118°	45°	HBS 090 605 045