

# SP200DAS AEROSOL PHOTOMETER



## AN OVERVIEW



The DOP SOLUTIONS PHOTOMETER with the most advanced zero stability for testing HEPA and ULPA filters.

In-built data acquisition with HEPA filter reporting software for USB connection to PC. The software allows for data capture and will find leaks that might otherwise be missed, supports ISO14644-3 compliance.

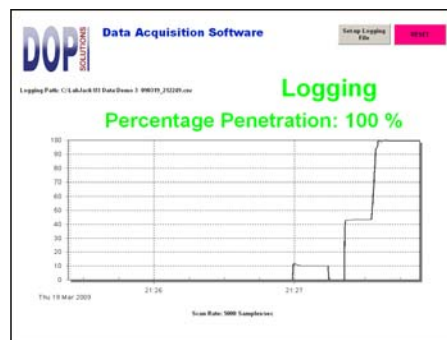
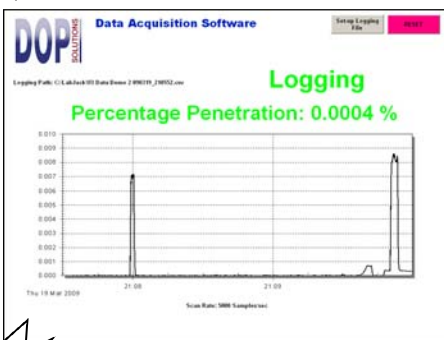
The Photometer meets or exceeds the current British, American, European and Australian requirements for filter testing with aerosol challenge. efficiency or leak testing.

## BENEFITS OF THE SP200DAS™

- Weighs only 9kgs
- Travel case included
- Comprehensive manual included
- Digital read-out : mass concentration in micro-grams per litre ( $\mu\text{g/l}$ ) or direct percentage penetration as data
- True real time indication - not processed
- Supported by factory trained personnel from our centrally situated Service Centre in Hertfordshire in the UK or one of our overseas partners
- Two stream solenoid switched – may be computer controlled or remotely operated
- Switchable DNS makes upstream measurements stable and more accurate when poor mixing is found
- Unrivalled stability – enables measurement to 99.9999% efficiency.
- Visual & audible alarm.
- True positive and negative display around zero.
- Nuclear toxic chamber option.
- Interface to computer option.

NEW

## DATA ACQUISITION & FILTER TESTING SOFTWARE



NEW

## SP20A DIGITAL PROBE (OPTION)

Advanced scanning probe for SP200 photometers - **articulating multi-directional plastic scanning head** inserted into a stainless steel hand-grip with digital display, remote visual alarm and software control buttons. Probe and hand-grip/display can be separated for ergonomic scanning. **GUARANTEED FOR LIFE** - free replacement for a component fault.



## PRODUCT

Aerosol  
Photometer

## MODEL NUMBERS

SP200DAS

Available from  
BSRIA Instrument  
Solutions.  
Tel. 01344 459314  
Fax. 01344 465556  
www.bis.fm

## SPECIFICATIONS

### Sample rate

Nominally 1 cubic foot per minute - 28 litre per minute

### Sample pump

Brushless DC 24V motor—highly reliable for continuous duty

### Accuracy

Better than 5 % of FSD on either scale

### Sensitivity

0.00001 µg/l

### Zero

Indicates on negative and positive side of zero

### Zero stability

Better than  $\pm 0.00003$  µg/l after 20 minutes.

### Range

Two switchable ranges - high and low.  
100 µg/l to 1,000 µg/l and 1.0000 to 0.00001µg/l mass concentration when scaled up by a factor of 10.

100% to 1,000% and 1,0000% to 0.00001% penetration when scaled up by a factor of 10.

### Maximum Concentration

250 µg/l absolute-not continuous.

### Dynamic Noise Suppression Switch (DNS)

Switched in or out with green LED indicator - 75% noise reduction.

### Alarm

Adjustable audio alarm with probe LED indicator.

### Computer Output

USB

### Power

90-250V Universal - 50 or 60 Hz.

### Physical Specifications

Length 417 mm Depth 290 mm Height 143 mm Weight: 9 kg

### Case

Robust transport case for storage and shipping.

## CALIBRATION

Calibration is made using the most sophisticated system available. Aerosols to 0.0001µg/l can be repeatably generated. The photometer is supplied fully calibrated with certification to meet all current international filter test legislation. Some of these are :-

British Standards

European Standards

IEST recommended practices.

## ORDERING INFORMATION

### 1. Photometer Only:

SP200DAS 90-250V 50/60Hz

### 2. Choose from one of the following Filter Scanning Probes:

#### SP20A

Advanced scanning probe for SP200 photometers: *articulating multi-directional plastic scanning head* inserted into a stainless steel hand-grip with digital display, remote visual alarm and software control buttons.

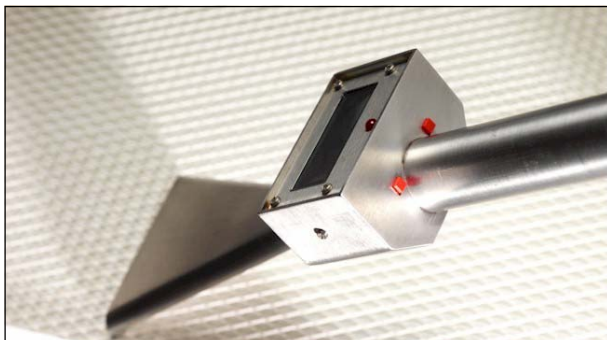
#### SP20

Stainless Steel Fishtail scanning probe with a digital readout to match the photometer readout. Supplied with connector hoses 3.6 metres in length.

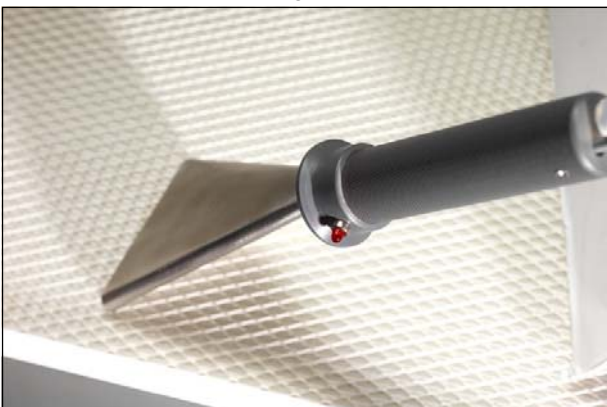
#### SP12

Stainless Steel Fishtail scanning probe with knurled PVC grip for SP200 & 6 way XLR connector, tubing and 3.6 metre length of cable and LED alarm indicator. Probe inlet face has a 78mm scanning width and a 1 square inch inlet area.

## OTHER PROBE OPTIONS

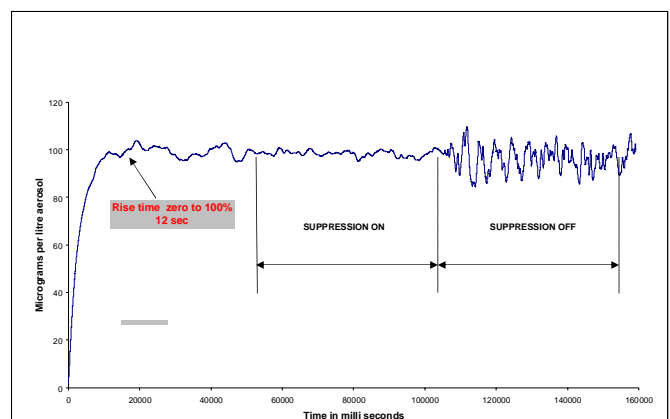


SP20 Digital Probe



SP12 Fishtail Probe

## DYNAMIC NOISE SUPPRESSION



Switchable DNS makes upstream measurements stable and more accurate when poor mixing is found