

# Plug-in Voltage Quality Recorders VLogR/ VLogQ

- Fast and easy recording of voltage trends, dropouts and power quality according to EN50160
- Extremely easy to use - direct plug into the mains power socket and simple PC connection for setup and download with PQLog software
- Continuous recording of all values with no gaps
- Clear graphical summary of data and quick overview of key power quality parameters
- Min, Max, Average RMS values (1/4 cycle) with time stamps
- Actual transient display (>100  $\mu$ s) with time stamp (Q Version)
- Individual harmonic and THD values with trends (Q Version)
- Statistical analysis of data according to EN50160
- Remote access capability via an external modem



## Description

**VLog R** – measures and records minimum, maximum and average RMS voltage values and dips down to one half cycle.

**VLog Q** – records additional power quality parameters including transients and harmonics up to the 32<sup>nd</sup>

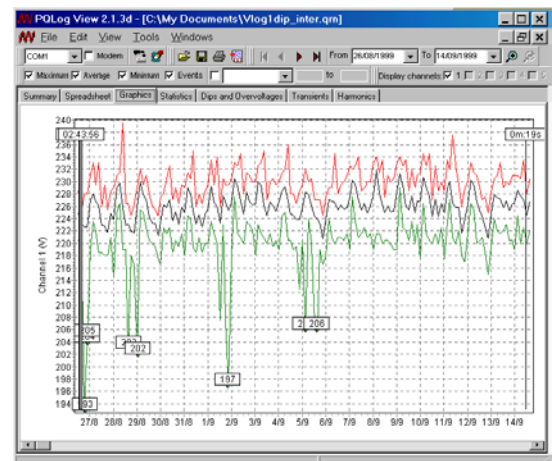
## PQLog software

**PQLog Setup** – Simple set up of internal clock, logging periods and intervals with default values for quick results.

**PQLog View** – Data presentation showing RMS voltage and harmonic trends, actual transients, summary information and statistics in accordance with EN50160

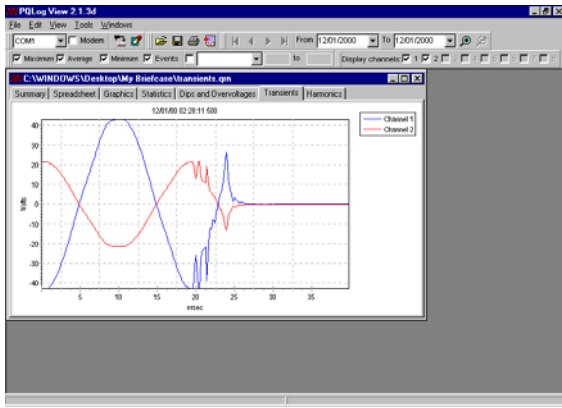
## Applications

The increasing use of modern electronic equipment incorporating switch mode power supplies has resulted in a dramatic deterioration in power quality in many installations. The consequences of poor power quality include malfunction and reduced lifetime of electronic equipment, inefficient use of energy and potential safety hazards due to overheating.

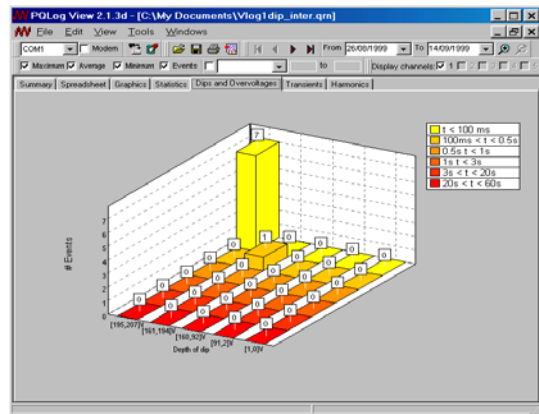


The VLog series of plug in voltage quality recorders offer an extremely easy to use solution for detecting and recording power quality problems enabling remedial action to be taken.

VLog satisfies the needs of maintenance and facilities management personnel in industry, utilities and large service organisations where satisfactory power quality is essential to the operation of the business.



Transient measurement with VLog Q



Voltage Dip measurement with VLog R

Features	VLog R	VLog Q
Operating Voltage	100 – 250V	100 – 250V
Average RMS value	Yes	Yes
Resolution	0.125 V	0.125 V
Maximum RMS value	Yes	Yes
Resolution	0.5 V	0.125 V
Minimum RMS value	Yes	Yes
Resolution	0.5 V	0.125 V
Number of events	32,000	175,000
Dips / Interruptions	Yes	Yes
Time resolution	5 ms	5 ms
Voltage resolution	1V	0.125 V
Over-Voltages	No	Yes
Time Resolution		5 ms
Voltage resolution		0.125 V
Frequency	No	Yes
Harmonics Measurement EN 601000-4-7	No	Yes (up to 32 <sup>nd</sup> )
Number of recording channels	1 Phase to Neutral	1 Phase to Neutral 2 Phase/Neutral to Ground
Transients	No	Yes
Remote operation via modem	Yes	Yes

**Order reference - scope of delivery:**

**Delivery Contents:** Plug in VLog, PQLog software, RS232 cable

**Part numbers:** VLogR Euro plug SH8101A VLogR UK plug SH8101G  
 VLogQ Euro plug SH8301A VLogQ UK plug SH8301G



[www.lem.com](http://www.lem.com)

**LEM NORMA GmbH**  
 Export department  
 Liebermannstraße F01  
 CAMPUS 21  
 A-2345 BRUNN AM GEBIRGE  
 TEL: +43(0)2236 691 502  
 FAX: +43(0)2236 691 400  
 E-mail: lna@lem.com

**GREAT BRITAIN & IRELAND**  
**LEM UK**  
 Geneva Court  
 1 Penketh Place  
 West Pimbo  
 Skelmersdale, Lancashire WN8 9QX  
 TEL: +44(0)1 695 72 07 77  
 FAX: +44(0)1 695 50 704  
 E-mail: luk@lem.com

**NAFTA**  
**LEM Instruments Inc.**  
 23822 Hawthorne Boulevard #100  
 US-TORRANCE, CA 90505  
 TEL: +1 310 373 09 66  
 FAX: +1 310 373 90 56  
 E-mail: liu@lem.com

**NETHERLANDS**  
**LEM Nederland B.V.**  
 Rijzendeweg 5  
 NL-4634 TV WOENS DRECHT  
 TEL: +31(0)16 46 154 62  
 FAX: +31(0)16 46 166 06  
 E-mail: lne@lem.com

**BELGIUM & LUXEMBURG**  
**LEM Belgium sprl-bvba**  
 Route de Petit-Roelux, 95  
 B-7090 BRAINE-LE-COMTE  
 TEL: +32(0)67 55 01 14  
 FAX: +32(0)67 55 01 15  
 E-mail: lbe@lem.com

**LEM Instruments, Inc**  
 Camino Real, 871 dpto.502  
 San Isidro - Lima 27 - Perú  
 TEL: +51-1-8551963  
 FAX: +51-1-2216492  
 E-mail: cpg@lem.com

Printed in Austria  
 Technical modifications reserved  
 Publication A10706 E