

FLIR BuildIR

Infrared Building Analysis Software

FLIR BuildIR is a software package specifically designed to carry out advanced analysis of building structures. FLIR BuildIR is used to analyze images taken with an infrared camera, and create inspection reports based on these images.



Key Features

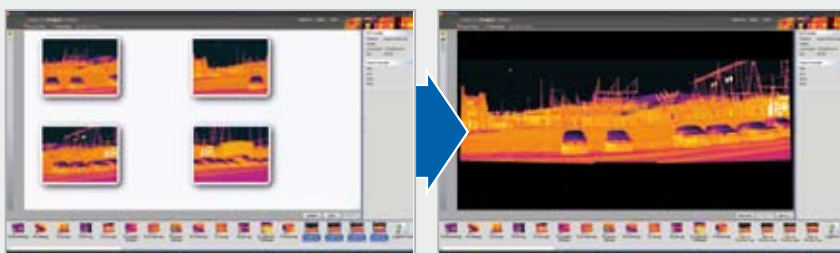
- Possibility of assessing scope of damage/problem
- See, quantify and estimate potential energy cost savings
- Panorama: create one image from many to cover large objects or increase resolution
- More than 10 professional pre-designed report templates for: air infiltration, moisture, insulation deficiencies, and estimation of potential energy savings, energy cost comparison
- Use the image grid tool to quantify geographical areas
- Link files
- Create graph of the conditions during the inspection

Energy Cost Comparison Report



With the NEW Energy Cost Comparison report you easily calculate the cost savings achieved if identified problems are attended to.

The Panorama Tool



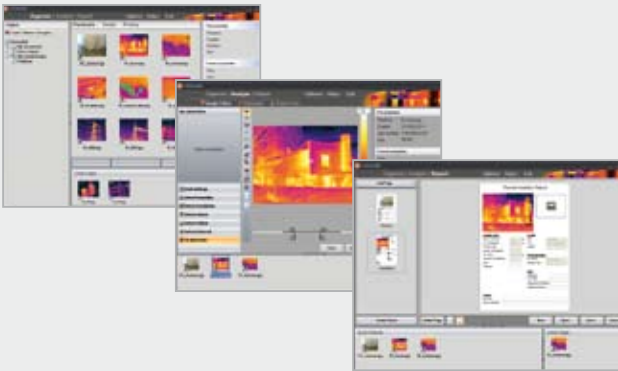
The Panorama tool, used for stitching multiple images to one large image, also has corrective perspective and crop functionality.

Examples of Analyses

- Detect humidity problems
- Find insulation deficiencies
- Find air infiltration
- Analyze building structures
- Estimate annual energy costs and savings
- Work with data logging results

Three simple steps: Organize - Analyze - Report

The workspace in FLIR BuildIR is divided into three main tabs; Organize, Analyze and Report, in order to simplify the building related analyses. Organize your images, analyze your findings and create a professional inspection report with the templates in the software.



Customize the reports with your personal logo, header, footer, fonts and colors.

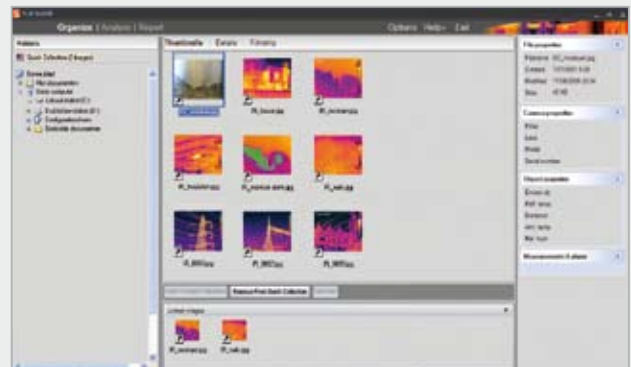
A Stand-Alone Software

FLIR BuildIR is a stand-alone software. The reports are created as .doc or .docx-files directly in Microsoft Word. FLIR BuildIR is available in English, German, French and Italian.

For a 30 day trial version of FLIR BuildIR, please visit <http://flir.custhelp.com>.

The Quick Collection Workspace

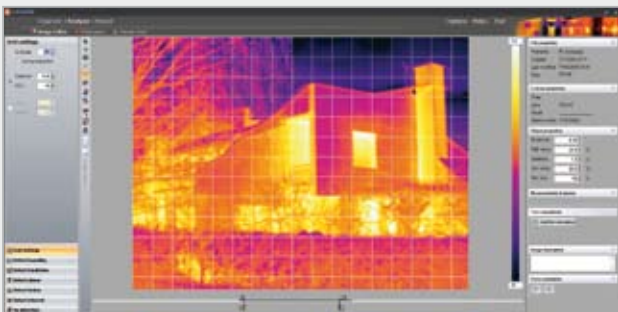
Add images saved in different locations to the Quick Collection, a temporary workspace, to speed up analyzing and report creation. The right pane displays properties, annotations, etc. for the selected image.



You can easily create links between your infrared images and the corresponding visual images. The links are used throughout the workspace.

The Image Editor

The Image Editor has special alarms to detect moisture, insulation deficiencies, and temperatures above, below or between set levels. You can easily add and edit measurements, change palettes, rotate and adjust the image to optimize the visualization of anomalies.



The grid function allows the user to quantify geographical areas.

Import Data Logging Results

The Sensor tool plots a graph of the conditions during the inspection recorded with a data logger, useful when interpreting your IR images in the report.



The Sensor tool displays the results of your data logger.

Specifications and prices subject to change without notice.

Copyright © 2009 FLIR Systems. All right reserved including the right of reproduction in whole or in part in any form.